



FINANCIAL NETWORKING COMPANY PROFILE

ABOUT US

At Great Impress Kenya Limited, we are a dynamic, multi-faceted organization committed to facilitate Direct Investors to assist Government Development, businesses, communities, and individuals across the globe. With expertise from key industries who provide professional Expertise to deliver world-class solutions in global financial networks health development, and agricultural capacity building. Our aim is to foster sustainable growth in African countries through community development initiatives while delivering cutting-edge services. Although cosmetic manufacturing is one of our investments and we are focusing to encourage the youths and single mothers to invest in manufacturing and agriculture farming. Our pride is to plant 100 Million trees across Africa continent as part of our priority.

Company Overview

We are a financial networking consultancy that bridges the gap between capital seekers & capital providers. Our focus is on structuring viable projects, facilitating access to funding, & building long-term partnerships between investors, institutions, and businesses. By combining financial expertise with strategic networking, we provide more than advice we open doors.

**"Turning Vision
Into Funded
Reality."**

Who We Are

Trusted Financial Networking Consultants We are trusted financial networking consultants, dealmakers, and advisors with a deep understanding of capital markets and investment ecosystems. Our role is to connect the right people, structure sustainable financial solutions, and ensure projects receive the support they need to grow and succeed.

Benefits of Working with Us

Direct access to credible investors We simplify complex funding processes, reduce risks through well-structured deals, and accelerate timelines by leveraging our strong networks. With a foundation built on trust, transparency, and professionalism, we create lasting partnerships that deliver long-term value for hospitals, universities, and private enterprises alike.

ceo@gikltd.co.ke || info@gikltd.co.ke || www.gikltd.co.ke



OUR CORE VALUES

Great Impress Kenya Limited is founded on integrity, transparency, and excellence. We foster innovation, build lasting partnerships, and deliver sustainable financial solutions that create value for our clients and investors alike.

1

Integrity & Transparency

We uphold the highest ethical standards in every transaction building trust through honesty, accountability, and clear communication.

2

Excellence in Execution

We deliver superior financial solutions, ensuring precision, professionalism, and measurable impact in every project we structure.

3

Innovation & Insight

We embrace innovation in financial design and investment networking turning complex challenges into strategic opportunities.

4

Partnership & Collaboration

We believe that growth is achieved through strong, enduring partnerships that unite investors, businesses, and institutions.

5

Sustainability & Impact

We are committed to fostering investments that not only generate profits but also drive inclusive growth and long-term development.

6

Client Success

Our clients' success defines ours we go beyond consultation to build pathways for real financial transformation.

» OUR VISION AND MISSION

■ Vision

To transform healthcare systems globally by providing innovative, evidence solutions that enhance resilience, efficiency, and sustainability, ensuring access to quality healthcare for all.

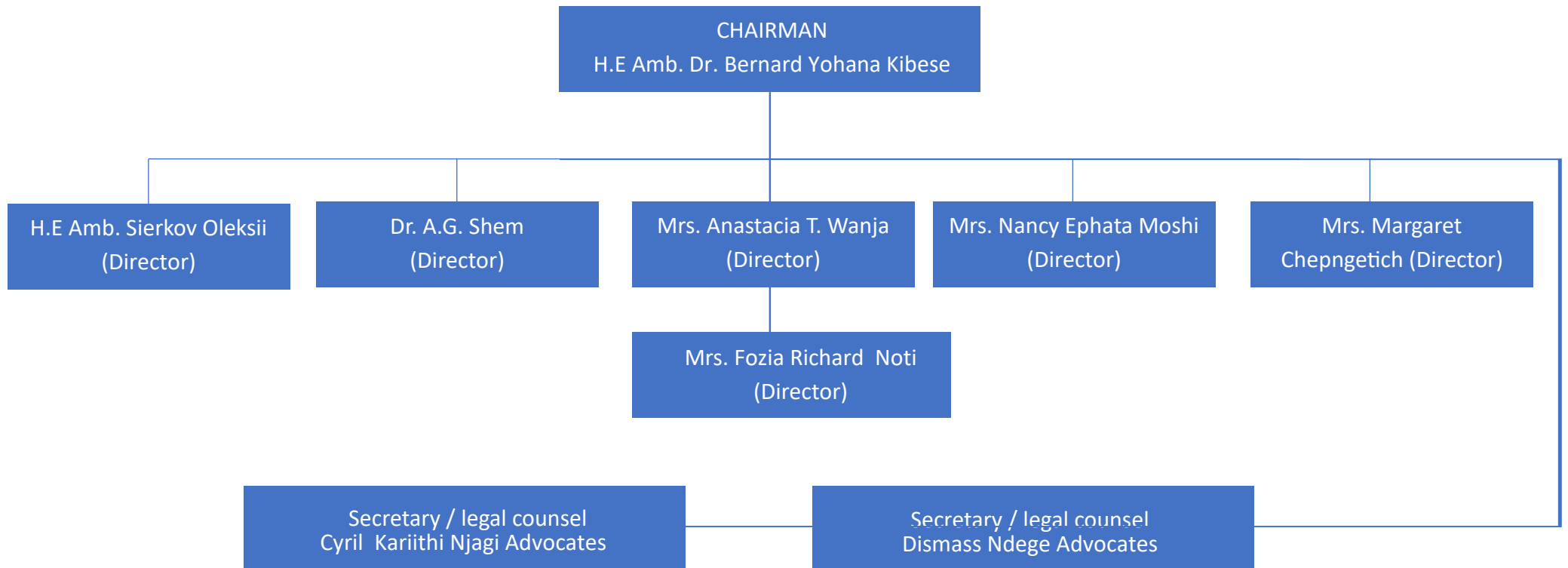
■ Mission

We are dedicated to support governments, organizations, and communities by offering strategic insights, pioneering financing models, and comprehensive healthcare solutions. Our mission is to strengthen health systems, improve healthcare financing, and enhance service delivery through the application of cutting-edge technologies, policy advisory, and results-based methodologies tailored to local contexts.

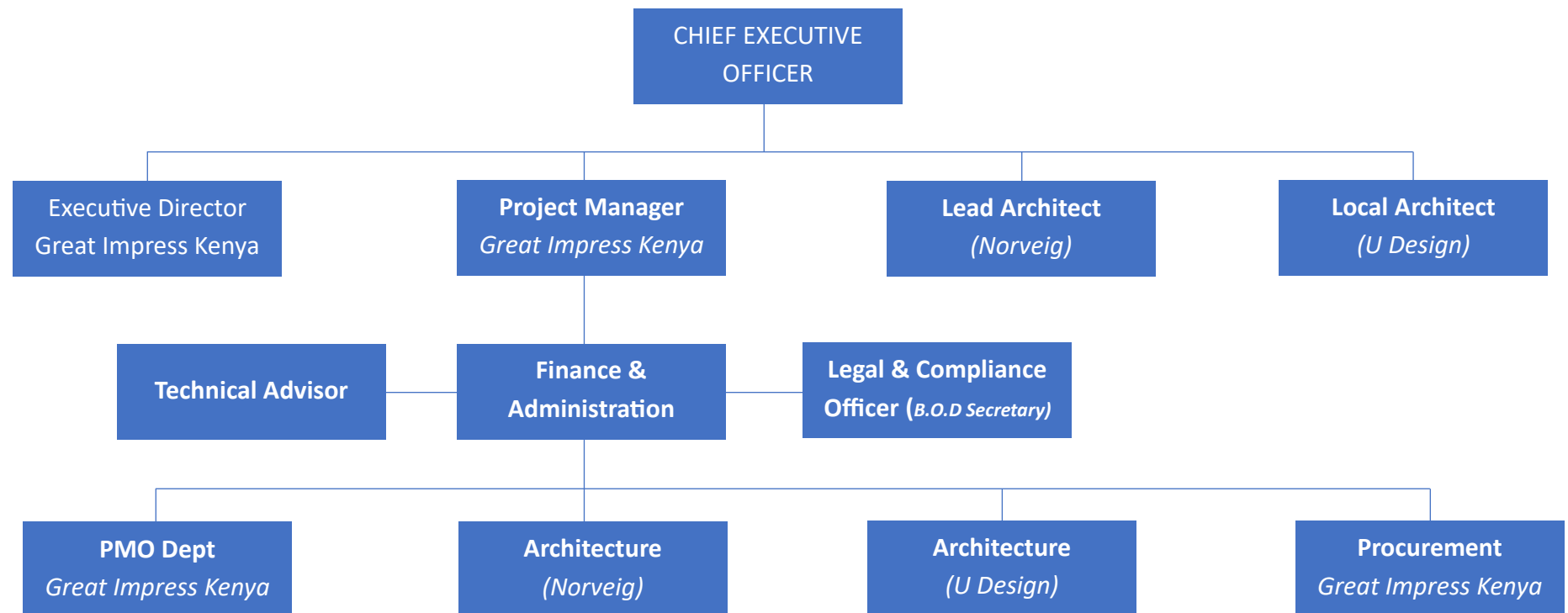




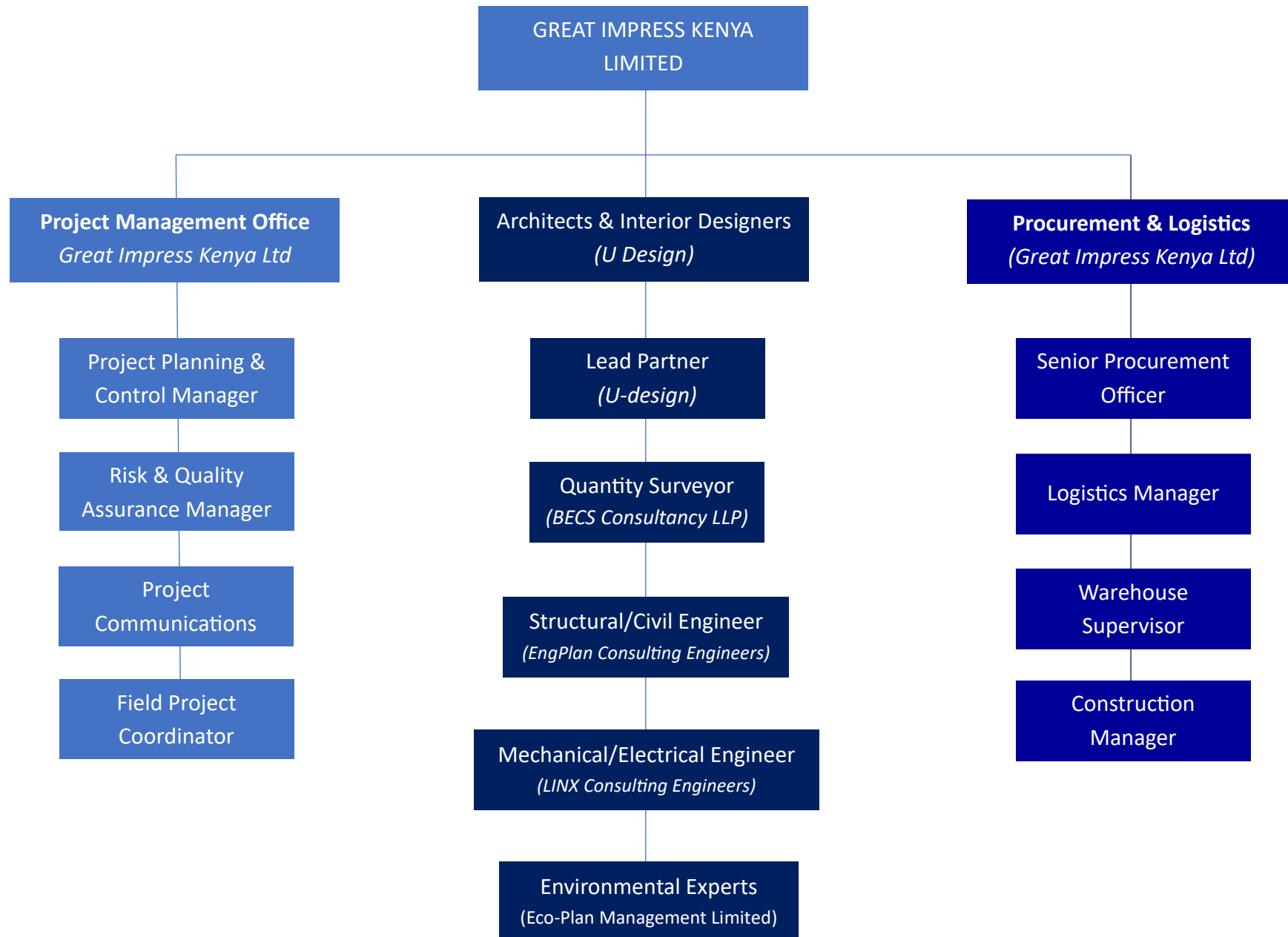
EXECUTIVE DIRECTORS



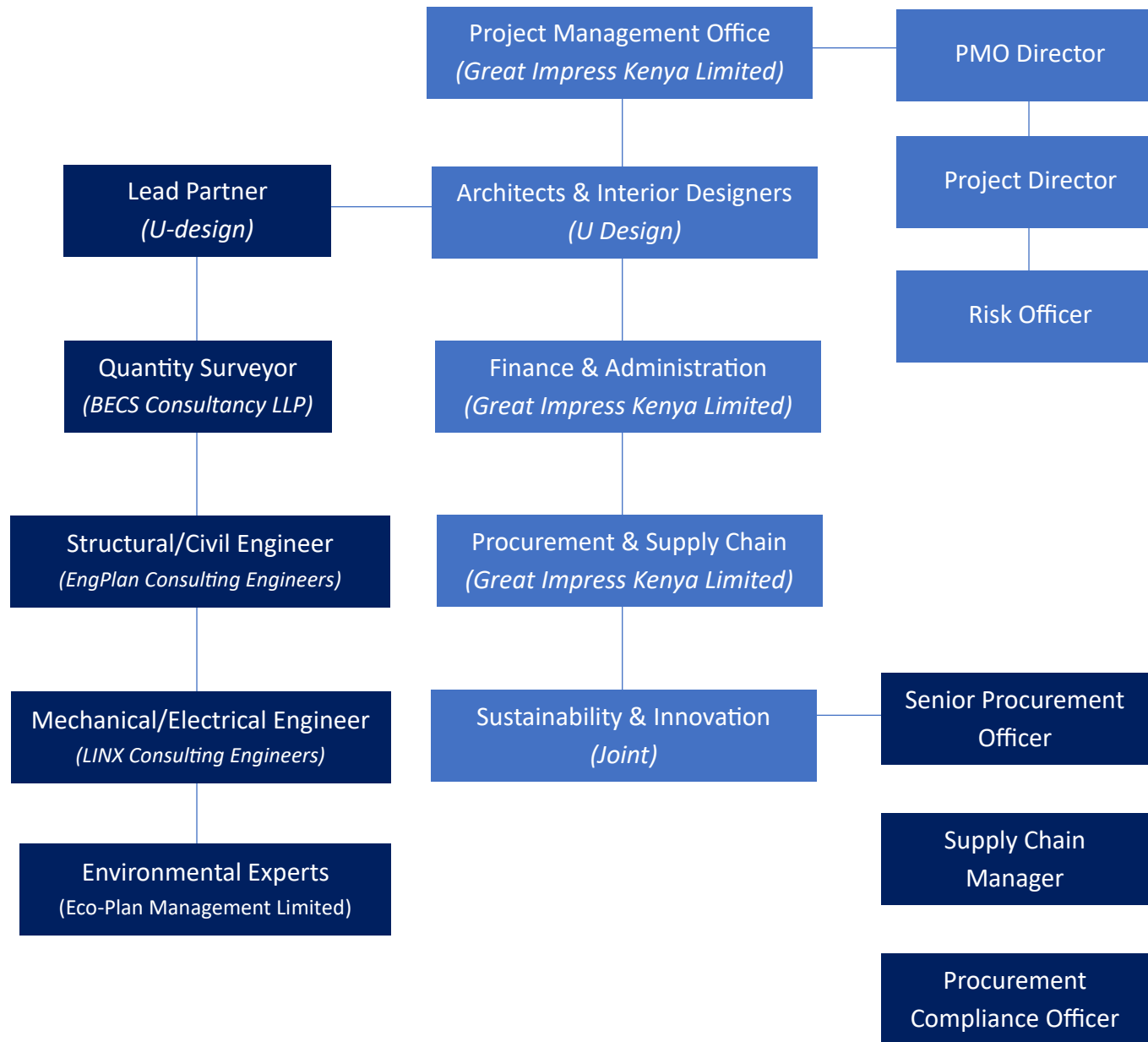
EXECUTIVE MANAGEMENT



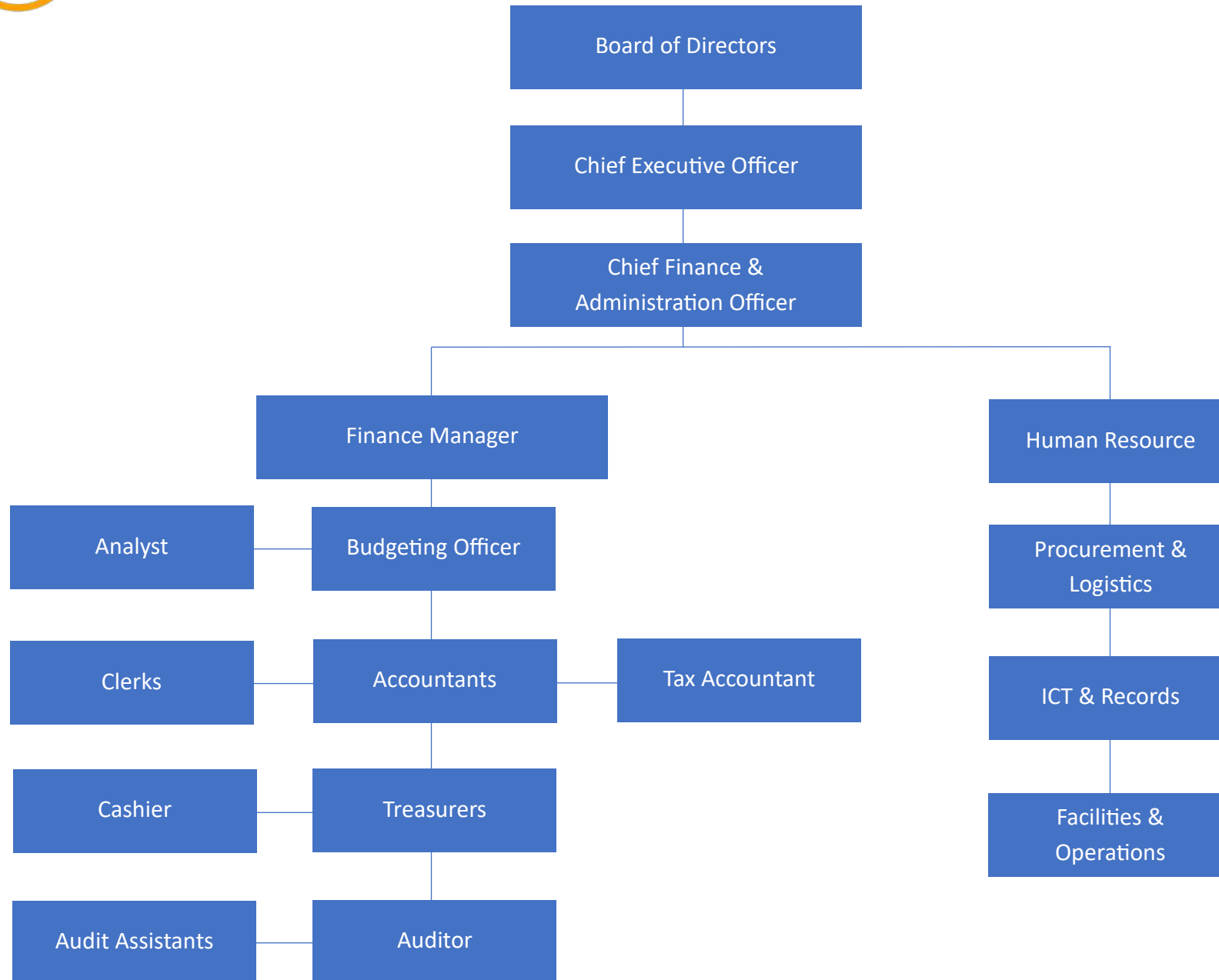
CONSORTIUM OF IMPLEMENTATION



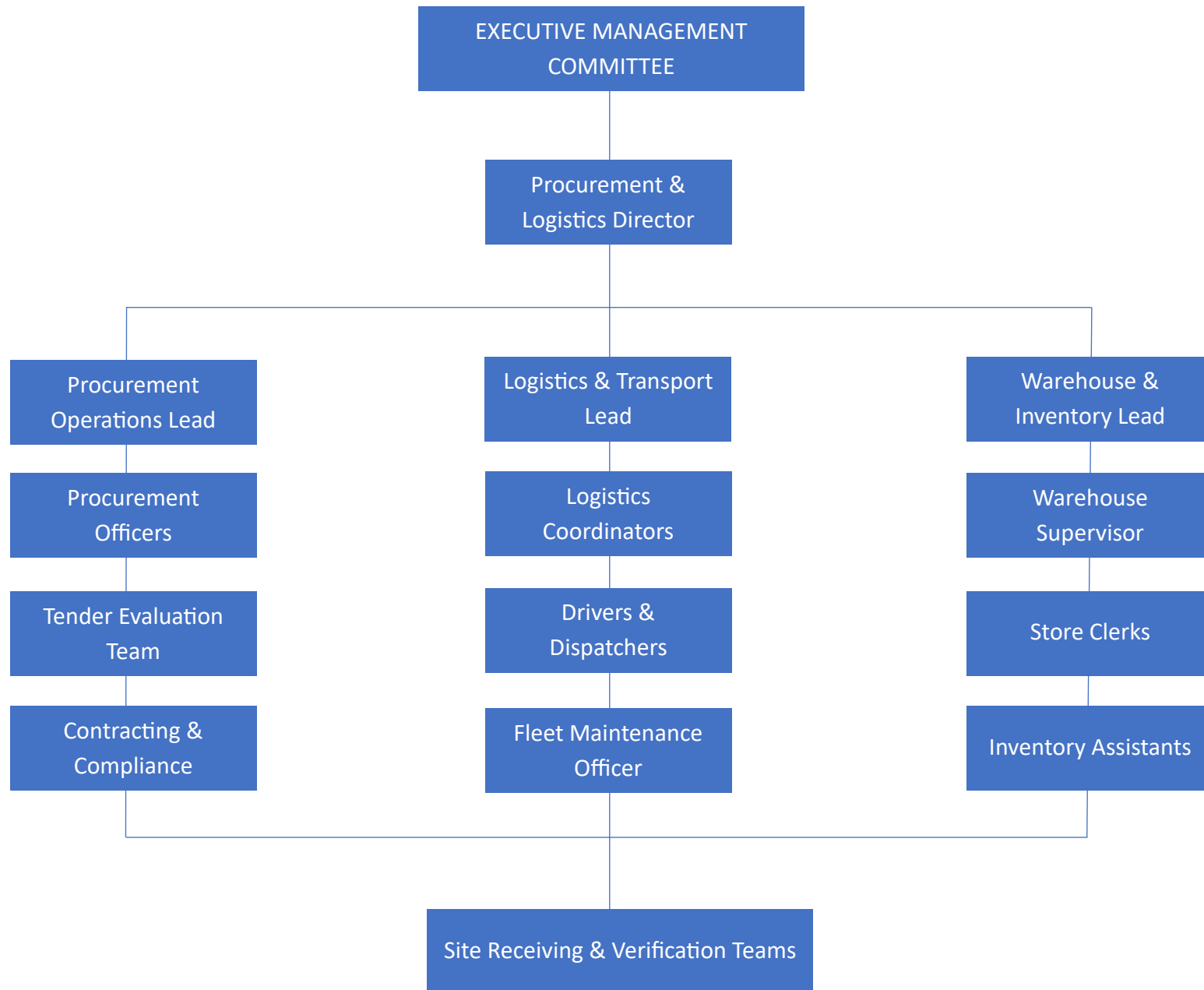
OPERATIONAL STRUCTURE



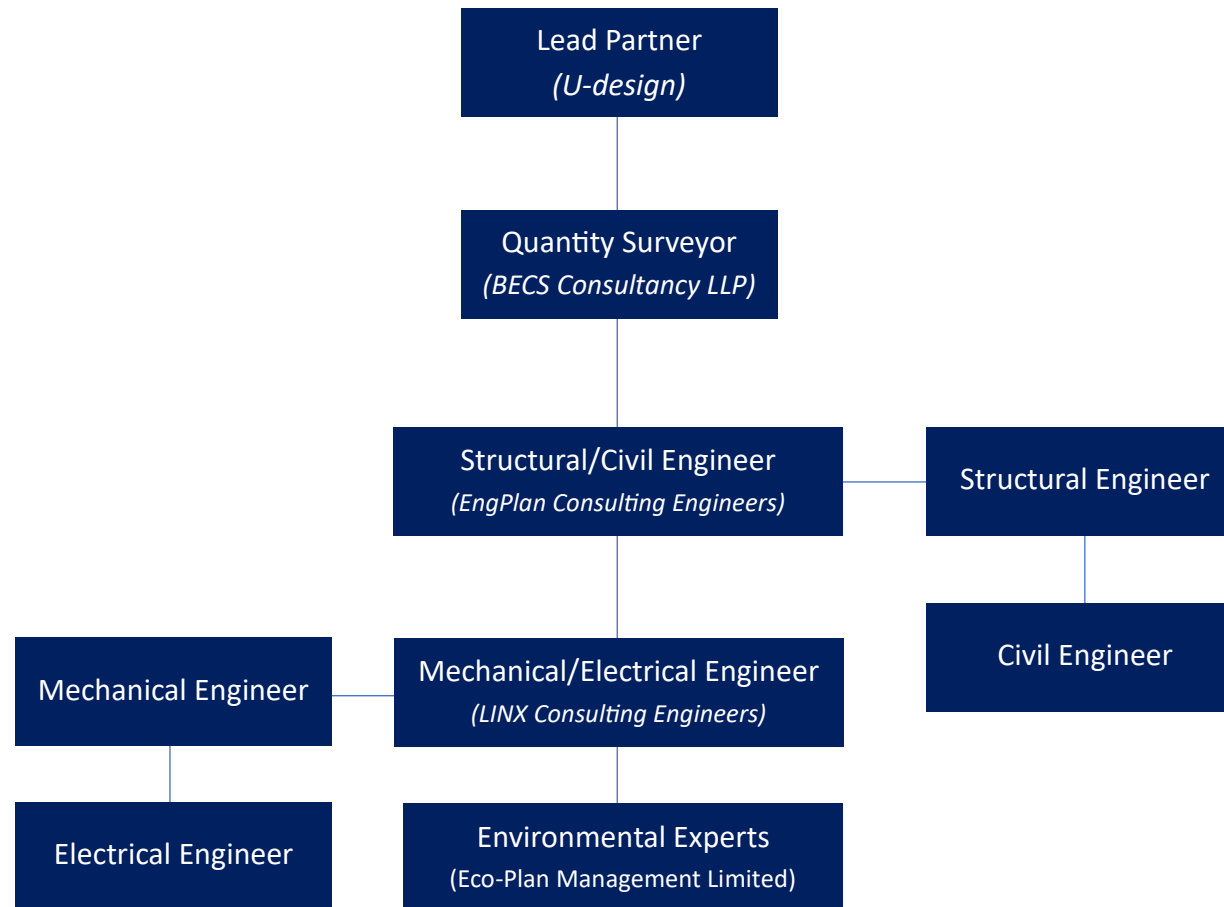
FINANCE & ADMINISTRATION STRUCTURE



PROCUREMENT



UDESIGN CONSORTIUM



» PROJECTS WE CAN DO

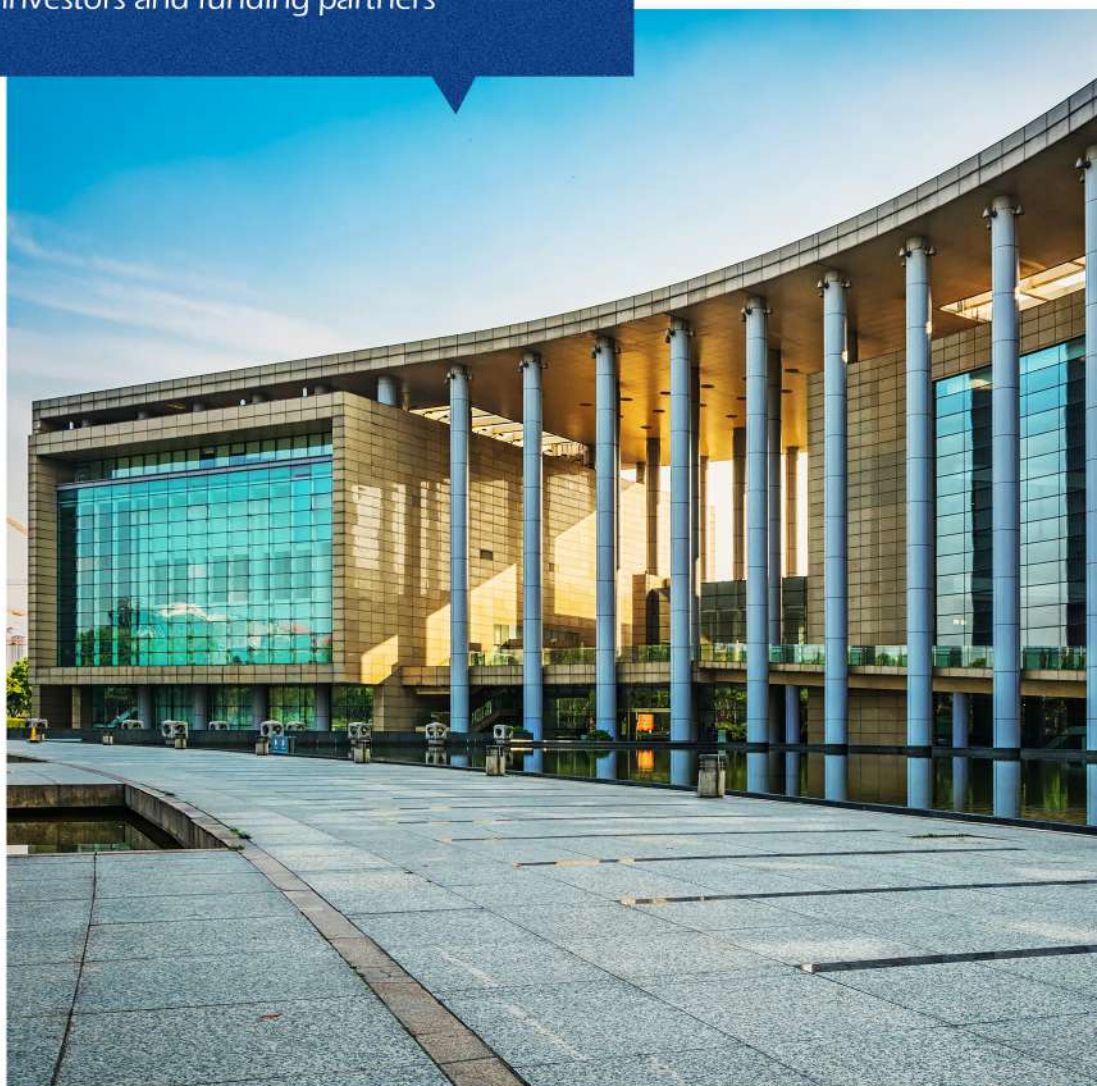
From residential to commercial properties, we provide financial structuring and investor networking to bring ambitious projects to life. Our approach ensures developers gain access to capital while aligning with the long-term interests of investors and communities.

1

REAL ESTATE DEVELOPMENT

Fully financed,
high-impact real estate
developments that deliver value
to investors, residents, and
the wider community.

We assist in raising capital for infrastructure, research facilities, and student accommodation projects. By connecting educational institutions with investors and funding partners



2

UNIVERSITIES AND EDUCATIONAL INSTITUTIONS

Financially viable,
modern educational
institutions that foster innovation,
inclusivity, and sustainable
learning growth.

3

HOSPITALS AND HEALTHCARE FACILITIES

We support healthcare institutions in securing the funding needed to build, expand, or modernize their facilities, and connect projects with investors who are keen on healthcare development.



Well-financed, sustainable healthcare facilities that expand access to quality medical services and strengthen the overall healthcare ecosystem.

ceo@gikltd.co.ke || info@gikltd.co.ke || www.gikltd.co.ke

OUR SERVICES

We provide expert guidance designed to strengthen strategic decision-making, enhance operational efficiency, and unlock sustainable growth opportunities.

Our advisory services combine deep industry expertise with data driven insights to help organizations navigate complex business challenges and seize emerging opportunities.

Our focus areas include:

- **Business Strategy Development:**
Crafting actionable strategies that align with your vision, market realities, and long-term objectives.
- **Market and Competitive Analysis:**
Providing intelligence to identify growth areas, mitigate risks, and gain a competitive edge.
- **Financial/Operational Performance Review:**
Assessing business health and recommending performance optimization strategies.
- **Organizational Restructuring:**
Guiding transformations to improve agility, efficiency, and leadership alignment.
- **Investment & Expansion Advisory:**
Supporting mergers, acquisitions, partnerships, & new market entries with thorough analysis and strategic planning.

Outcome:
Empowered leadership, informed decision-making, and measurable business growth through strategic clarity and operational excellence.

1

STRATEGIC BUSINESS ADVISORY

2 CAPITAL RAISING SUPPORT

We assist businesses and institutions in identifying, structuring, and securing the right funding solutions to drive expansion, infrastructure development, and innovation. Our approach combines strategic financial planning with deep market insight to ensure that capital acquisition aligns with long-term organizational goals.

Our services include:

1. Equity & Debt Financing:

Structuring investment opportunities & facilitating access to both local and international funding sources.

2. Project Finance Advisory:

Developing bankable project proposals & financial models for infrastructure & largescale initiatives.

3. Investor Relations & Pitch Support:

Preparing investor-ready documentation, presentations, and negotiations to attract credible partners.

4. Public–Private Partnership Advisory:

Supporting collaborations between private investors and government entities for sustainable development projects.

5. Capital Structuring & Valuation:

Advising on optimal capital mix, valuation analysis, and financial restructuring to enhance investment readiness.

Outcome:

Empowered clients with the capital resources, financial structure, and investor confidence necessary to achieve growth and innovation goals.

3

PUBLIC-PRIVATE PARTNERSHIP (PPP) FACILITATION

We specialize in structuring, coordinating, and facilitating partnerships that bridge government initiatives with private sector investment. Our PPP advisory services are designed to promote sustainable infrastructure development, efficient service delivery, and shared value creation across sectors.

Our services include:

1. Project Identification & Feasibility Analysis:

Evaluating potential PPP opportunities and assessing financial, technical, and social viability.

2. Transaction Structuring:

Designing frameworks that balance public objectives with private sector returns and risk management.

3. Stakeholder Engagement:

Coordinating alignment among government agencies, investors, financiers, and development partners.

4. Regulatory & Compliance Support:

Ensuring all PPP transactions adhere to national policies, legal frameworks, and international best practices.

5. Investment Mobilization:

Attracting private capital through innovative financing models and bankable project packaging.

Outcome:

Efficiently structured PPP projects that accelerate development, enhance service delivery, and foster long-term collaboration between the public and private sectors

We provide specialized financial advisory services to support hospitals, universities, real estate developments, and other sectors in structuring and securing funding for complex projects. Our approach ensures that each initiative is financially viable, sustainably structured, and aligned with both investor and institutional objectives.

Our services include:

1. Project Structuring & Financial Modeling:

Designing robust financial frameworks and projections to ensure bankability and investor confidence.

2. Feasibility & Risk Assessment:

Evaluating technical, financial, and operational aspects to minimize risk and enhance project success.

3. Capital Sourcing:

Identifying and engaging suitable financiers, including commercial banks, development finance institutions (DFIs), private investors, and impact funds.

4. Transaction Advisory:

Supporting negotiations, documentation, and due diligence to achieve favorable financing terms.

5. Public–Private Finance Solutions:

Structuring hybrid funding models for projects involving both public and private sector participation.

Outcome:

Fully financed, sustainable projects that drive social impact, economic growth, and institutional advancement through innovative funding solutions

4

PROJECT FINANCE ADVISORY

5

RISK ASSESSMENT

We conduct comprehensive evaluations of project and organizational risks to enhance resilience, protect investments, and ensure long-term success. Our team applies quantitative and qualitative risk analysis methods to identify vulnerabilities, assess potential impacts, and develop proactive mitigation strategies.

Our services include:

1. Project Risk Analysis:

Identifying financial, operational, regulatory, and environmental risks across all project phases.

2. Risk Modeling & Scenario Planning:

Building predictive models to simulate potential outcomes and guide informed decision-making.

3. Compliance & Governance Reviews:

Ensuring adherence to industry standards, contractual obligations, and regulatory frameworks.

4. Mitigation Strategy Development:

Designing actionable frameworks to minimize exposure and strengthen project sustainability.

5. Monitoring & Reporting:

Establishing continuous risk tracking systems and reporting mechanisms for ongoing assurance.

Outcome:

Strategically managed risks, improved decision-making, and enhanced project stability ensuring that every investment is built for long-term success.



6

INVESTOR NETWORKING

We connect clients with a diverse network of private investors, financial institutions, and strategic partners to accelerate business growth and project implementation. Our investor networking services are designed to bridge credible opportunities with the right sources of capital, expertise, and collaboration.

Our services include:

1. Investor Identification & Matchmaking:

Linking clients with suitable investors based on sector, scale, and investment appetite.

2. Deal Structuring & Partnership Facilitation:

Supporting negotiations and structuring win-win arrangements that align interests and maximize value.

3. Investor Readiness Preparation:

Helping clients refine proposals, business plans, and financial models to attract serious investors.

4. Networking Events & Investment Forums:

Organizing and facilitating targeted engagement platforms to showcase viable projects.

5. Relationship Management:

Maintaining long-term partnerships between clients and investors to ensure continued collaboration and success.

Outcome:

Enhanced access to capital, trusted partnerships, and sustainable business growth driven by strong investor relationships

OUR SOLUTIONS

1. Project Finance Consultation

We guide clients in developing bankable financial plans that align with investor expectations.

2. Investor Introductions & Capital Networking

We connect projects with private investors, institutions, and funding partners to unlock opportunities

3. Financial Structuring & Risk Analysis

We design sustainable financial models and assess risks to ensure long-term project success.

4. Public–Private Partnership Facilitation

We structure and facilitate collaborations between governments, institutions, and private investors.

5. Strategic Business Advisory

We provide insights that strengthen financial decision-making and position projects for growth.

6. Capital Raising Support

We assist organizations in securing funding for expansion, infrastructure, and innovation.



ceo@gikltd.co.ke || info@gikltd.co.ke || www.gikltd.co.ke



OUR SKILLS

1. Financial Expertise

Our team brings deep financial acumen & industry experience to every project, ensuring sound decisionmaking and sustainable results. We combine analytical precision with strategic insight to design financial solutions that enhance performance, attract investment, and ensure long-term value creation.

2. Networking & Relationship Building

We excel at cultivating strong, strategic relationships that drive collaboration, open investment channels, and create opportunities for sustainable growth. Through our extensive local and international networks, we connect clients with the right partners, investors, and institutions to support impactful development and long-term success.

3. Negotiation & Deal Structuring

We specialize in negotiating and structuring deals that create mutual value, minimize risk, and ensure long-term project success. Our team combines financial expertise, legal understanding, and strategic insight to guide clients through complex transactions with confidence and clarity



OUR SKILLS

1. Project Management

We provide end-to-end project management expertise to ensure that every initiative is delivered on time, within budget, and to the highest quality standards. Our approach combines strategic oversight, technical precision, and proactive coordination to transform concepts into successful, sustainable outcomes.

2. Regulatory & Compliance Knowledge

We possess strong expertise in navigating complex regulatory frameworks & ensuring that all projects, partnerships, & financial activities comply with national & international standards. Our team ensures transparency, accountability, and ethical governance across every stage of project implementation.





OUR STRATEGIC PARTNERSHIP

Great Impress Kenya Limited

proudly leads a dynamic partnership uniting expertise from across finance, design, engineering, and healthcare innovation. As the lead financial and networking consultant, we provides strategic coordination, financial structuring, and investor engagement to ensure sustainable project development.

Our collaboration brings together distinguished partners:

U Design

a Kenyan engineering and construction company providing comprehensive design-build solutions tailored to local conditions and standards. in Partnership with:

BECS Consultancy LLP

LINX Consulting Engineers Limited

England Consulting Engineers Limited

Together,

this partnership integrates financial innovation, architectural excellence, and engineering precision to deliver world-class, future-ready infrastructure projects in East Africa and beyond. Each partner contributes specialized expertise while maintaining close coordination through a shared commitment to quality, sustainability, and client value.

ceo@gikltd.co.ke || info@gikltd.co.ke || www.gikltd.co.ke

PARTNERSHIP OVERVIEW

Great Impress Kenya Limited spearheads a strategic partnership that brings together leading experts in finance, architecture, engineering, and healthcare development. This alliance is designed to deliver integrated, world-class infrastructure solutions tailored to regional needs.

Through collaboration with:

U-Design

BECS Consultancy LLP

LINX Consulting Engineers Limited

England Consulting Engineers Limited

Great Impress Kenya Limited provides the financial leadership and coordination necessary to translate visionary concepts into sustainable, bankable projects.

Our partnership combines expertise, and strong financial structuring to ensure every project achieves technical excellence, operational efficiency, and long-term impact.

PROJECT PORTFOLIO OVERVIEW

This partnership unites financial innovation, engineering excellence, & expertise to deliver transformative facilities across Africa. Each project reflects our shared commitment to design efficiency, financial sustainability, and world-class patient experience.





OUR PARTNERSHIP FRAMEWORK

A Synergy of Finance, Design, and Healthcare Innovation



**GREAT IMPRESS
KENYA LIMITED**
Financial Consultant

Provides strategic financial advisory, project structuring, and investor engagement. Ensures every project is financially sound and bankable through strong investor networks and capital facilitation.



a design-led company whose focus is in contemporary design across a wide range of sectors and building types at the heart of there professional commitment with:

BECS Consultancy LLP

LINX Consulting Engineers Limited

England Consulting Engineers Limited



U Design is a Kenyan based firm offering services in Architectural and U Interior Design consultancy.

The firm's objective is to partner with the client and provide a high standard of modern contemporary and flexible professional expertise that exceeds their expectations. Despite our diversity in array of clientele our professional approach to any architectural commissions is always personalised for each individual project. Each commission receives the same meticulous performance approach ensuring that the end design product has attention to detail and sensitivity to interpretation of the client's brief. During the whole design stage, we are in contact with our clients, accommodating their ideas & suggestions while offering expert opinion on the best design alternatives. This approach to design commissions has served us quite well over the years and has eliminated the client alienation factor from the finished design. This design approach and philosophy assists clients in formulating environmentally responsible solutions of a unique quality that maximizes the site potential within budget and time criteria.

OUR DESIGN PROCESS

From its inception through to completion, the development of an architectural project is an extremely lengthy process, with many external influences, regulations, & forces to consider as well the various contributing internal elements of the design team. As a result of this there are a core set of drawings and documents that (most) projects require in order for them to be procured successfully, and be completed efficiently and without error. and these are broken down into what is frequently referred to as the architecture design process. Broken down into seven steps.

DUNDANI » HOSPITAL DEVELOPMENT

U-Design Architects, Planners, Interior Designers & Project Managers





» INTERIOR DESIGN PORTFOLIO

U-Design

Architects, Planners, Interior Designers & Project Managers

TINDERET APARTMENTS, KILELESHWA



ceo@gikltd.co.ke || info@gikltd.co.ke || www.gikltd.co.ke

TINDERET APARTMENTS, KILELESHWA



Type A Area= 293m²
(Scale 1:100)

TINDERET APARTMENTS, KILELESHWA



BROOKSIDE 717, NAIROBI





OYSTER PEARL, SPRING VALLEY, NAIROBI



OYSTER PEARL, SPRING VALLEY, NAIROBI



Type A Area= 293m²
(Scale 1:100)

OYSTER VILLAGE, DONHOLM





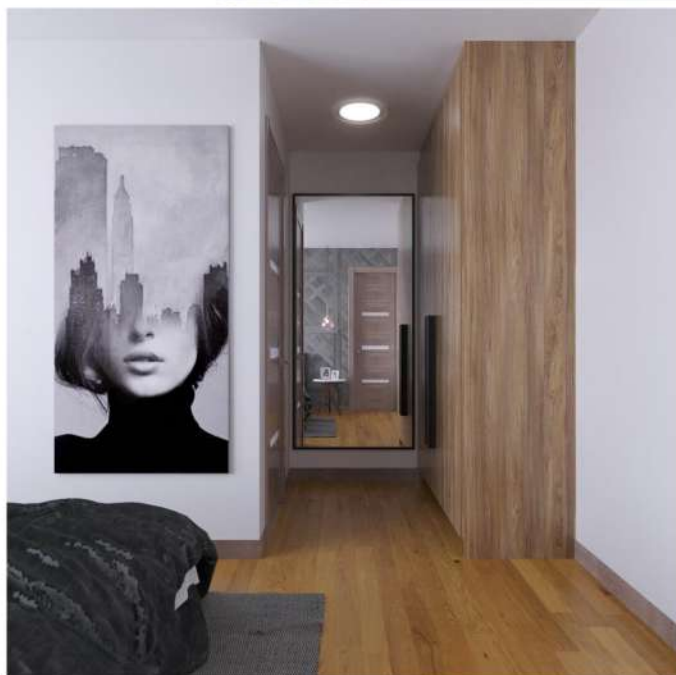
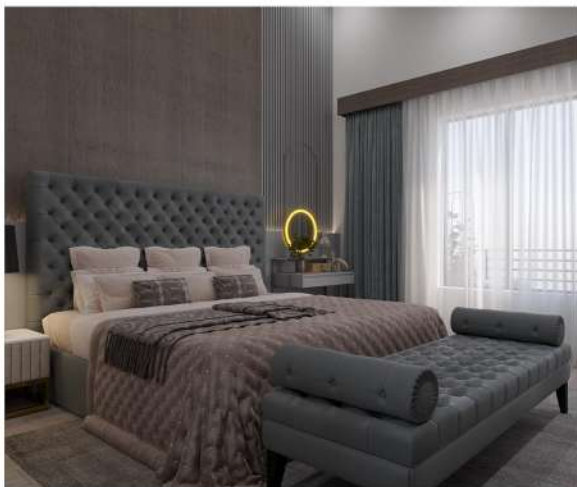
RESIDENTIAL DEVELOPMENTS

U-Design Architects, Planners, Interior Designers & Project Managers

OYSTER MEWS, LANGATA



OYSTER MEWS, LANGATA

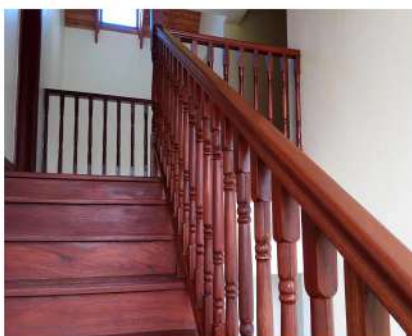




MLIMA KENYA HOLIDAY HOMES, NARUMORU



MLIMA KENYA HOLIDAY HOMES, NARUMORU





THE RIVERINE, KITENGELA



» PRIVATE RESIDENCE

U-Design Architects, Planners, Interior Designers & Project Managers

PRIVATE RESIDENCE, NAIROBI

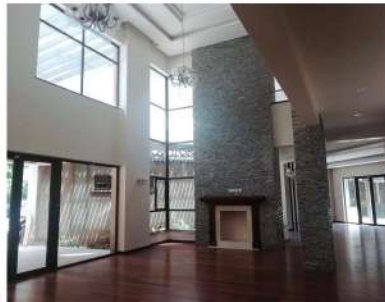




PRIVATE RESIDENCE

U-Design Architects, Planners, Interior Designers & Project Managers

PRIVATE RESIDENCE, NAIROBI



» HOSPITALITY

U-Design Architects, Planners, Interior Designers & Project Managers

NOMAD PALACE HOTEL, NAIROBI





» HOSPITALITY

U-Design Architects, Planners, Interior Designers & Project Managers

HOTEL IN MERU, MERU



» RETAIL

U-Design Architects, Planners, Interior Designers & Project Managers

DUFY DUTY FREE SHOP, JKIA



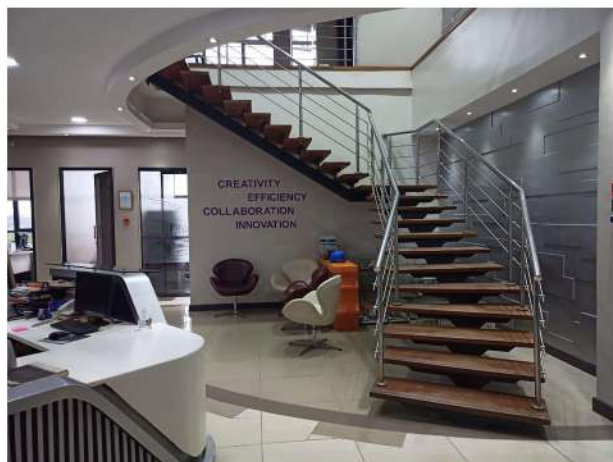


» CORPORATE

U-Design Architects, Planners, Interior Designers & Project Managers



UDESIGN OFFICES LAVINGTON



» RESIDENTIALS

U-Design || Architects, Planners, Interior Designers & Project Managers



Runda House
Project status: Completed
Project cost: Ksh.20m
Year: 2006



Ms. Matu House
Project status: Completed
Project cost: Ksh.45m
Year: 2017



Karen Mwitw Rd House
Project status: Completed
Project cost: Ksh.40m
Year: 2010



Langata south rd
Project status: Completed
Project cost: Ksh.90m
Year: 2016



Nanyuki Villa (Nanyuki)
Project status: Design Stage
Project cost: Ksh. 80m
Year: 2019



Thika Greens (Thika)
Project status: Completed
Project cost: Ksh.30m
Year: 2022



» RESIDENTIALS

U-Design || Architects, Planners, Interior Designers & Project Managers



High groove (Kabete)

Project status: Proposal
Project cost: Ksh.xxxx
Year: 2022



Kencom Sacco Phase 2 (Runda)

Project status: Tender Stage
Project cost: Ksh.xxxx
Year: 2021



Karen Mwitw Rd House

Project status: Completed
Project cost: Ksh.40m
Year: 2010



Owashika (James Gichuru)

Project status: Completed
Project cost: Ksh.375m
Year: 2021



Nanyuki Villa 2 (Nanyuki)

Project status: Design Stage
Project cost: Ksh. 80m
Year: 2019



Lake View (Toyota)

Project status: Tender Stage
Project cost: Ksh.70m
Year: 2020



» APARTMENTS

U-Design || Architects, Planners, Interior Designers & Project Managers



Marwa Heights (General Mathenge)

Project status: in Progress

Project cost: Ksh.350m

Year: 2022



City park Apartments

Project status: Completed

Project cost: Ksh.280m

Year: 2021



Fairview Apartment (Lavington)

Project status: Completed

Project cost: Ksh.150m

Year: 2017



Casa (General Mathenge)

Project status: Completed

Project cost: Ksh.535m

Year: 2019



Runda View (Runda)

Project status: Completed

Project cost: Ksh. 60m

Year: 2010



Oyster Pearl

Project status: Completed

Project cost: Ksh.1.2b

Year: 2022



» APARTMENTS

U-Design || Architects, Planners, Interior Designers & Project Managers



Lenana road

Project status: Design Stage

Project cost: Ksh. 1.3b

Year: 2020



Fairview Apartments

Project status: Completed

Project cost: Ksh.400m

Year: 2021



Riruta Apartments (Riruta)

Project status: Proposal

Project cost: Ksh.250m

Year: 2016



Brookside 717 (Lavington)

Project status: Completed

Project cost: Ksh.520m

Year: 2017



General Mathenge Apartments

Project status: Completed

Project cost: Ksh. 1.3b

Year: 2019



Park Peak Apartments

Project status: Completed

Project cost: Ksh.500m

Year: 2021



» HOSPITALITY

U-Design || Architects, Planners, Interior Designers & Project Managers



Kamake Gardens
Project status: Completed
Project cost: Ksh.200m
Year: 2014



Muthaiga Golf club
Project status: Completed
Project cost: Ksh.25M
Year: 2017



Minnow Hotel (Jabavu)
Project status: Design Stage
Project cost: Ksh.1.5B
Year: 2022



Kitengela Hotel (Kitengela)
Project status: Under Construction
Project cost: Ksh.90m
Year: 2022



Tipuana Apartments
Project status: Completed
Project cost: Ksh.70M
Year: 2008



Serene Valley
Project status: Completed
Project cost: Ksh.400M
Year: 2016



» HOSPITALITY

U-Design || Architects, Planners, Interior Designers & Project Managers



Mountain of the moon (Uganda)

Project status: Completed

Project cost: 2M USD

Year: 2012



Mountain of the moon (Uganda)

Project status: Completed

Project cost: 2M USD

Year: 2017



Wasini Luxury villas (Wasini)

Project status: Completed

Project cost: Ksh.90m

Year: 2018



Brookside 717 (Brookside Drive)

Project status: Completed

Project cost: Ksh.435m

Year: 2019



Nomad palace (Eastleigh)

Project status: Completed

Project cost: Ksh.60M

Year: 2004



Panari Resort (Nyahururu)

Project status: Completed

Project cost: Ksh.407,016,500

Year: 2017



» COMMERCIAL

U-Design || Architects, Planners, Interior Designers & Project Managers



Lenana

Project status: Proposal
Project cost: Ksh.1.2B
Year: 2020



Nairobi Chapel

Project status: Completed
Project cost: kSH.75M
Year: 2019



Regis School (rUNDA)

Project status: Completed
Project cost: Ksh.XXXX
Year: 2019



Kiambu Mall (Kiambu)

Project status: Completed
Project cost: Ksh.2.0B
Year: 2020



Riverine Mall (Kitengela)

Project status: Ongoing
Project cost: Ksh.180M
Year: 2022



Lavington Mall (Lavington)

Project status: Completed
Project cost: Ksh.750M
Year: 2017



» COMMERCIAL

U-Design || Architects, Planners, Interior Designers & Project Managers



Jamii Milling (Eldoret)

Project status: Completed

Project cost: Ksh.1.0B

Year: 2017



Great lakes (Noor)

Project status: Ongoing

Project cost: kSH.173M

Year: 2022



St Luke Hospital (Eldoret)

Project status: Completed

Project cost: Ksh.100m

Year: 2022



Total Karen

Project status: Completed

Project cost: Ksh.56m

Year: 2022



Kigali Hospital (Kigali Hospital Rwanda)

Project status: Ongoing

Project cost: Ksh.150M

Year: 2022



Ndundani Hospital (Dar-es-salam)

Project status: Proposal

Project cost: Ksh.200M

Year: 2022





FINANCIAL NETWORKING COMPANY PROFILE

+254 746 631 395 || +254 746 635 895

+254 202 000 883 || +254 202 000 884

www.gikltd.co.ke || info@gikltd.co.ke

P.O Box 51790-00100 GPO, Nairobi, Kenya

**Joseph Kangethe Road Next to Moi Girls School
off Ngong Road**